

LONGMEADOW ADULT CENTER

211 MAPLE ROAD  
 LONGMEADOW, MA  
 01106

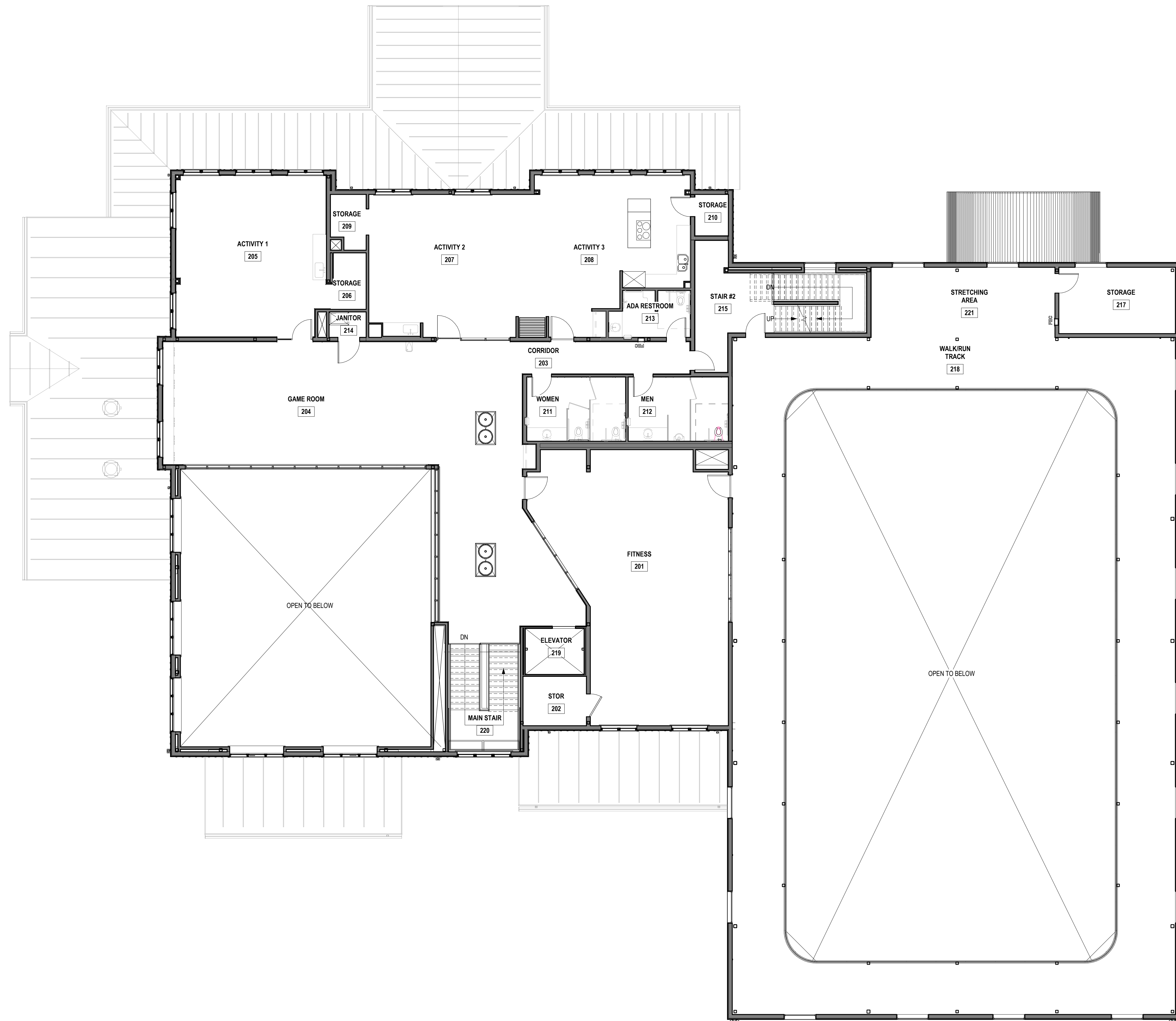
**Catlin Architecture, PC**

51 Railroad Street  
 Suite 130  
 Keene, NH 03431

Date: 2/5/2020  
 Project Number: 20170024

P: 603.352.2255  
 www.c-parchitect.com

① FIRST FLOOR PLAN  
 1/8" = 1'-0"



① 2 SECOND FLOOR - CLEAN  
 1/8" = 1'-0"

LONGMEADOW ADULT CENTER

211 MAPLE ROAD  
 LONGMEADOW, MA  
 01106

Catlin Architecture, PC

51 Railroad Street  
 Suite 130  
 Keene, NH 03431

Date: 2/5/2020  
 Project Number: 20170024

P: 603.352.2255  
 www.c-parchitect.com